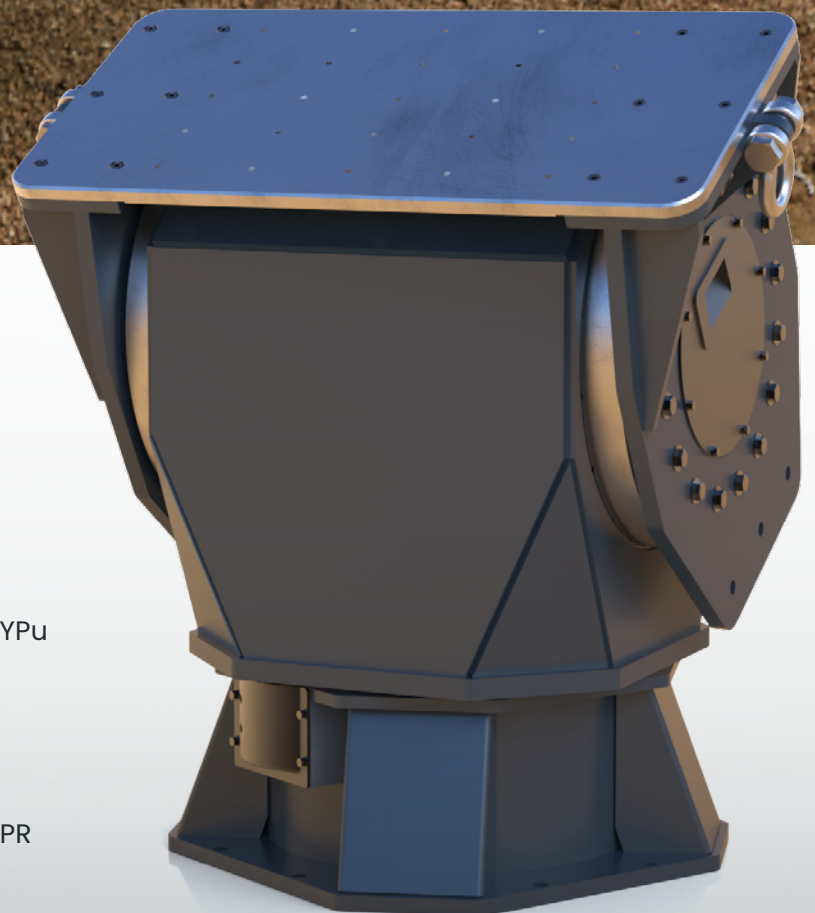
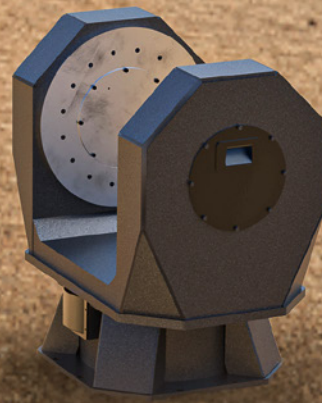




www.nextlevelrobotics.com

ROTATING SYSTEMS

LIGHT
MEDIUM
HEAVY



SINGLE AXIS POSITIONERS

Yaw & Positioners | NL-Rxxx-Y

TWO AXIS POSITIONERS

Yaw & Pitch Positioners | NL-Rxxx-YP

U Type Yaw & Pitch Positioners | NL-Rxxx-YPu

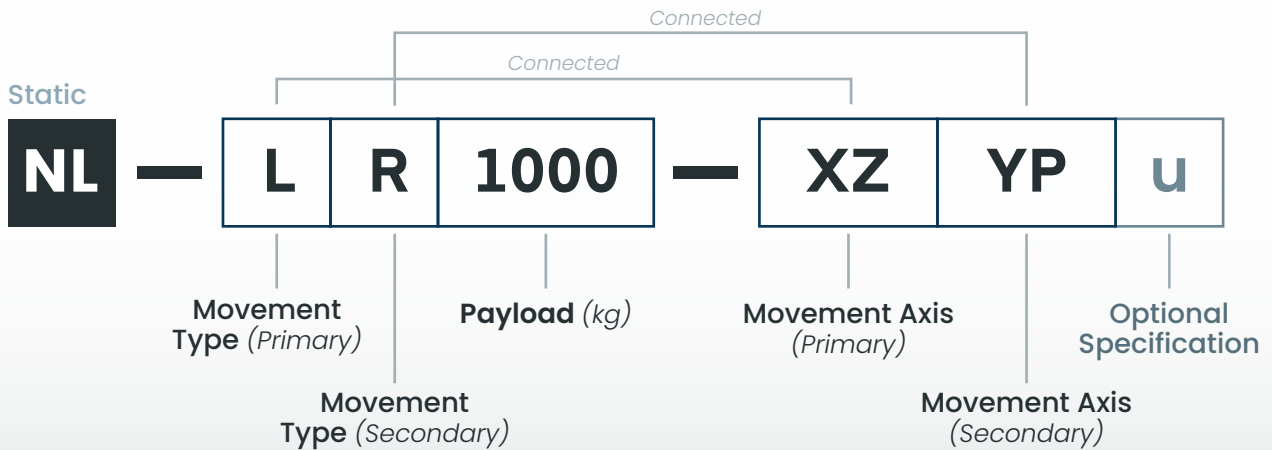
Pitch & Yaw Positioners | NL-Rxxx-PY

THREE AXIS POSITIONERS

Yaw & Pitch & Roll Positioners | NL-Rxxx-YPR

PRODUCT CODING SYSTEM

▶ NXL PRODUCTS



***Movement Type** should be listed **ascending from the ground** on which the machine is positioned.
 *If there is only one movement in the system, the secondary movement sections should be blank.

MOVEMENT TYPE

L Linear Motion

R Rotational Motion

MOVEMENT AXIS

X **Y** **Z**

Combinations: XY, XZ, XYZ

Y **P** **R**

Combinations: YP, PY, YPR

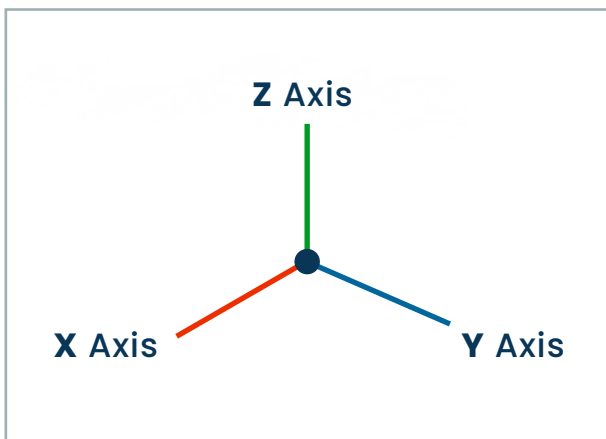
OPTIONAL SPECIFICATION

u U Type Rotator

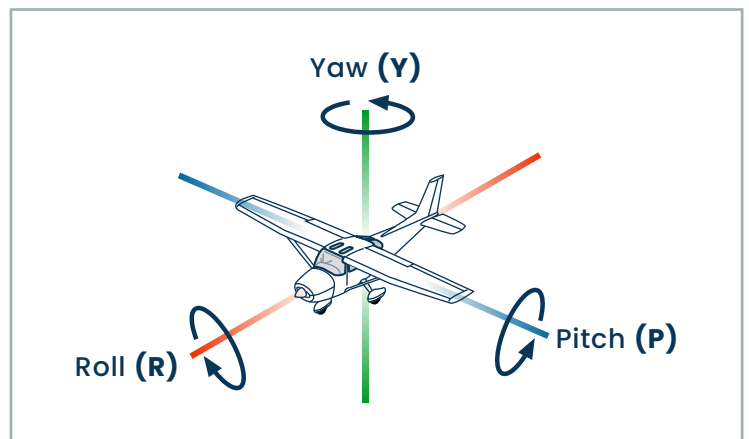
l L Type Rotator

*small letter

Linear Movements



Rotational Movements



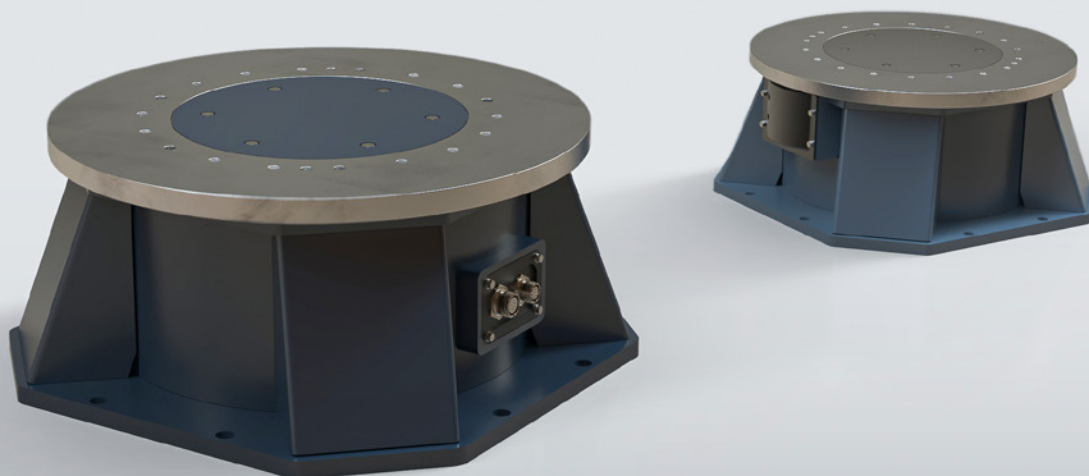
Code Example

NL-LR1000-XZYPu

"U-type system with 1000 kg payload, capable of linear movement on the X and Z axes, and rotational movement on the Yaw and Pitch axes."

YAW POSITIONERS

► NL-Rxxx-Y



	NL-R50-Y	NL-R100-Y	NL-R250-Y	NL-R500-Y	NL-R1000-Y	NL-R2000-Y	NL-R5000-Y	NL-R10000-Y	NL-R20000-Y	NL-R50000-Y
--	----------	-----------	-----------	-----------	------------	------------	------------	-------------	-------------	-------------

TECHNICAL SPECIFICATIONS

	NL-R50-Y	NL-R100-Y	NL-R250-Y	NL-R500-Y	NL-R1000-Y	NL-R2000-Y	NL-R5000-Y	NL-R10000-Y	NL-R20000-Y	NL-R50000-Y
Bending Moment (N.m)	196,2	392,4	981	1962	3924	7848	19620	39240	78480	196200
Vertical Load (kg)	50	100	250	500	1000	2000	5000	10000	20000	50000
Nominal Torque (N.m)	90	150	250	400	700	1100	2000	3000	3700	4500
Maximum Torque (N.m)	140	200	320	480	850	1400	3100	3800	4200	5300
Power (kW)	0,4	0,4	0,75	0,75	0,75	0,75	1	1,5	3	5
Nominal Speed (°/sn)	20	20	20	20	20	10	10	3	1	1
Maximum Speed (°/sn)	32	32	32	32	32	15	15	5	2	2
Standard Repeatability (deg)	±0,02									
Operating Range (deg)	-185° to +185°									
Encoder Type	Absolute Encoder									
Motor Type	Servo Motor									
Operating Temperature	- 20° C to 55° C									
Storage Conditions	- 40° C to 60° C									
Communication	Ethernet / IP MODBUS									

PHYSICAL

	NL-R50-Y	NL-R100-Y	NL-R250-Y	NL-R500-Y	NL-R1000-Y	NL-R2000-Y	NL-R5000-Y	NL-R10000-Y	NL-R20000-Y	NL-R50000-Y
Platform Size (mm)	250	250	300	350	500	500	650	750	800	800
Height (mm)	250	250	250	250	400	400	400	650	650	1000
Width / Depth (mm)	300x300	300x300	300x300	500x500	500x500	500x500	750x750	750x750	800x800	800x800
Weight (kg)	20	26	32	50	70	100	240	270	325	500

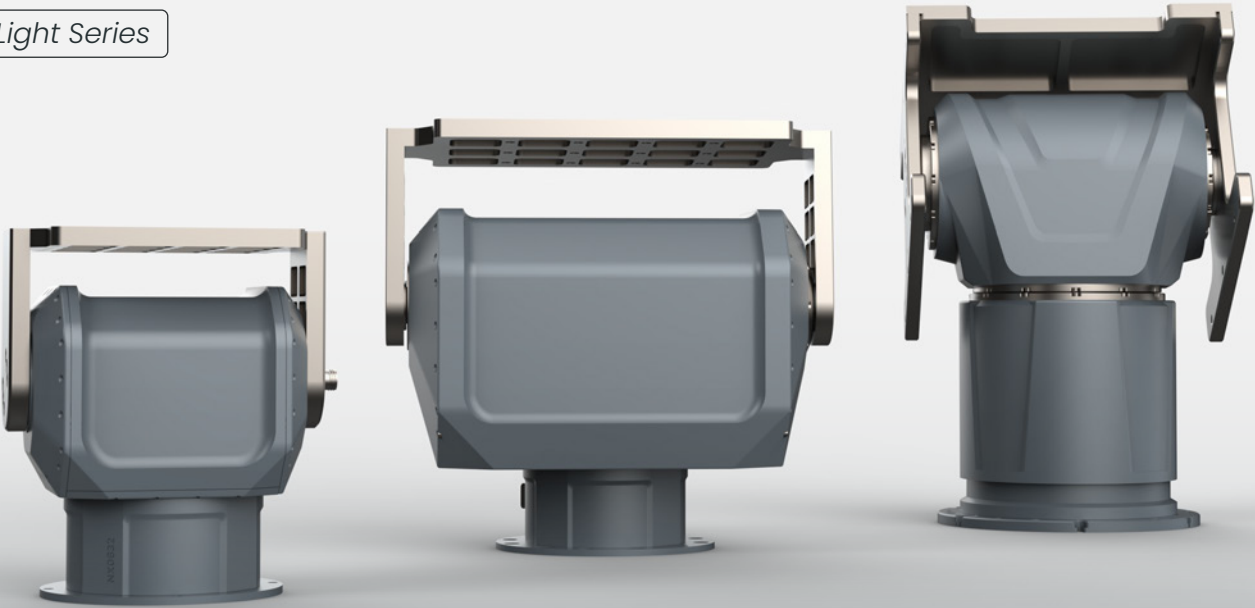
OPTIONAL

- 55° C to +90° C Operating Temperature	Serial Communication	±0.005 Position Repeatability	Slipping	Fixture
---	----------------------	-------------------------------	----------	---------

YAW & PITCH POSITIONERS

► NL-Rxxx-YP

Light Series



	NL-R5-YP	NL-R20-YP	NL-R50-YP	NL-R100-YP	NL-R150-YP	NL-R250-YP	NL-R500-YP
--	----------	-----------	-----------	------------	------------	------------	------------

TECHNICAL SPECIFICATIONS

		NL-R5-YP	NL-R20-YP	NL-R50-YP	NL-R100-YP	NL-R150-YP	NL-R250-YP	NL-R500-YP
Bending Moment (N.m)		100	250	550	600	700	850	2000
Vertical Load (kg)		5	20	50	100	150	250	500
Nominal Torque (N.m)	YAW	20	50	100	120	150	200	1100
	PITCH	30	60	100	250	300	350	1600
Maximum Torque (N.m)	YAW	30	75	150	180	225	300	1600
	PITCH	37,2	74,4	124	310	372	434	2400
Power (kW)	YAW	0,4	0,4	0,4	0,4	0,4	0,4	0,9
	PITCH	0,4	0,4	0,4	0,4	0,4	0,4	0,9
Nominal Speed (°/sn)		50	50	50	50	50	50	50
Maximum Speed (°/sn)		75	75	75	75	75	75	75
Standard Repeatability (deg)		±0,03	±0,03	±0,03	±0,03	±0,03	±0,03	±0,03
Operating Range (deg)	YAW	±185	±185	±185	±185	±185	±185	±185
	PITCH	±95	±95	±95	±95	±95	±95	±95
Encoder Type	Absolute Encoder							
Motor Type	Servo Motor							
Operating Temperature	- 20° C to 55° C							
Storage Conditions	- 40° C to 60° C							
Communication	Ethernet / IP MODBUS							

PHYSICAL

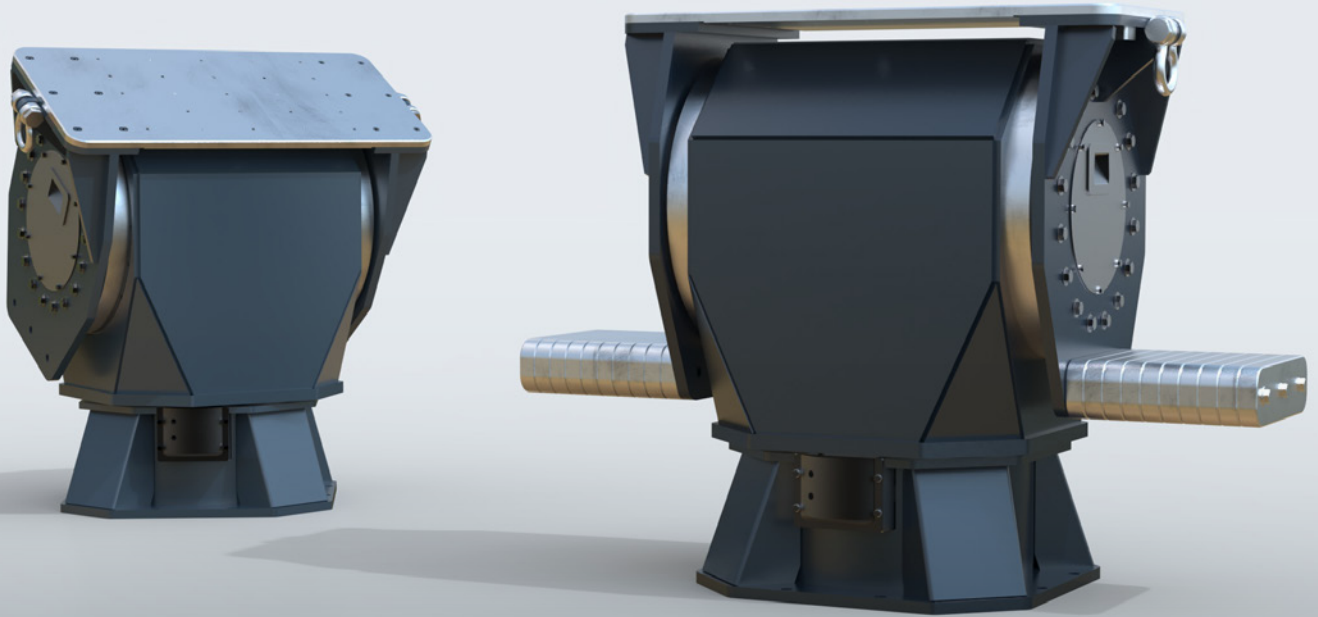
	NL-R5-YP	NL-R20-YP	NL-R50-YP	NL-R100-YP	NL-R150-YP	NL-R250-YP	NL-R500-YP
Height (mm)	250	350	400	400	650	650	650
Width / Depth (mm)	200x200	250x250	300x300	300x300	400x400	400x400	400x400
Weight (kg)	20	30	50	50	60	75	450

OPTIONAL

- 55° C to +90° C Operating Temperature	Serial Communication	±0.005 Position Repeatability	Slipping	Fixture
---	----------------------	-------------------------------	----------	---------

YAW & PITCH POSITIONERS

► NL-Rxxx-YP



	NL-R500-YP	NL-R1000-YP	NL-R2000-YP	NL-R5000-YP	NL-R10000-YP
--	------------	-------------	-------------	-------------	--------------

TECHNICAL SPECIFICATIONS

	NL-R500-YP	NL-R1000-YP	NL-R2000-YP	NL-R5000-YP	NL-R10000-YP	
Bending Moment (N.m)	2600	4800	9100	15500	24500	
Vertical Load (kg)	500	1000	2000	5000	10000	
Nominal Torque (N.m)	YAW	750	1000	1500	2200	3150
	PITCH	2200	3000	5200	8350	13400
Maximum Torque (N.m)	YAW	1062	1425	2118	3210	4394
	PITCH	2728	3720	6448	10354	16616
Power (kW)	YAW	0,75	0,75	1	2	2
	PITCH	0,75	0,75	2	2	5
Nominal Speed (°/sn)	10	10	5	5	2	
Maximum Speed (°/sn)	15	15	7,5	7,5	3	
Standard Repeatability (deg)	±0,03	±0,03	±0,03	±0,03	±0,03	
Operating Range (deg)	YAW	±185	±185	±185	±185	±185
	PITCH	±95	±95	±95	±95	±95
Encoder Type	Absolute Encoder					
Motor Type	Servo Motor					
Operating Temperature	- 20° C to 55° C					
Storage Conditions	- 40° C to 60° C					
Communication	Ethernet / IP MODBUS					

PHYSICAL

	NL-R500-YP	NL-R1000-YP	NL-R2000-YP	NL-R5000-YP	NL-R10000-YP
Height (mm)	1000	1000	1200	1400	1500
Width / Depth (mm)	600x600	600x600	750x750	750x750	1000x1000
Weight (kg)	600	750	1200	1750	2500

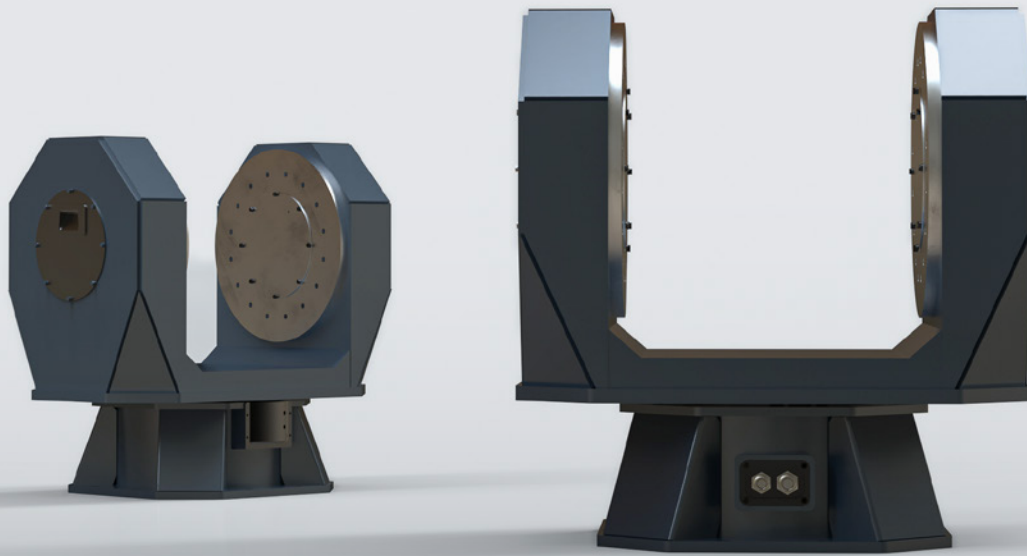
OPTIONAL

- 55° C to +90° C Operating Temperature	Serial Communication	±0.005 Position Repeatability	Slipping	Fixture
---	----------------------	-------------------------------	----------	---------



U TYPE YAW & PITCH POSITIONERS

► NL-Rxxx-YPu



NL-R500-YPu

NL-R1000-YPu

NL-R2000-YPu

NL-R5000-YPu

NL-R10000-YPu

TECHNICAL SPECIFICATIONS

		NL-R500-YPu	NL-R1000-YPu	NL-R2000-YPu	NL-R5000-YPu	NL-R10000-YPu
Bending Moment (N.m)		2500	4000	8000	13500	15600
Vertical Load (kg)		500	1000	2000	5000	10000
Nominal Torque (N.m)	YAW	750	1000	1500	2200	3150
	PITCH	2200	3000	5200	8350	13450
Maximum Torque (N.m)	YAW	1062	1425	2118	3210	4394
	PITCH	2728	3720	6448	10354	16678
Power (kW)	YAW	0,75	0,75	1	1	2
	PITCH	0,75	0,75	2	2	5
Nominal Speed (°/sn)		10	10	5	5	2
Maximum Speed (°/sn)		15	15	7,5	7,5	3
Standard Repeatability (deg)		±0,03	±0,03	±0,03	±0,03	±0,03
Operating Range (deg)	YAW	±185	±185	±185	±185	±185
	PITCH	±95	±95	±95	±95	±95
Encoder Type	Absolute Encoder					
Motor Type	Servo Motor					
Operating Temperature	- 20° C to 55° C					
Storage Conditions	- 40° C to 60° C					
Communication	Ethernet / IP MODBUS					

PHYSICAL

	NL-R500-YPu	NL-R1000-YPu	NL-R2000-YPu	NL-R5000-YPu	NL-R10000-YPu
Height (mm)	1000	1000	1200	1400	1500
Width / Depth (mm)	600x600	600x600	750x750	750x750	1000x1000
Weight (kg)	600	750	1200	1750	2500

OPTIONAL

- 55° C to +90° C Operating Temperature

Serial Communication

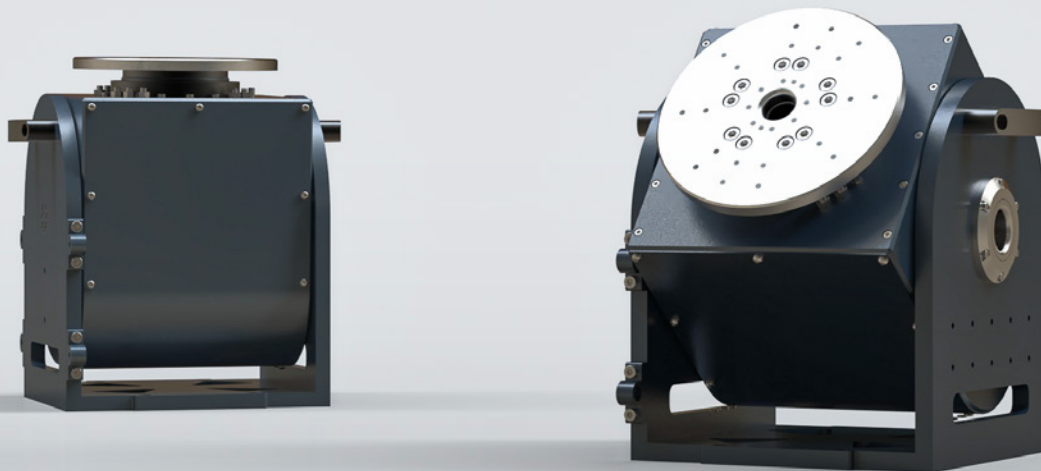
±0.005 Position Repeatability

Slipping

Fixture

PITCH & YAW POSITIONERS

► NL-Rxxx-PY



	NL-R20-PY	NL-R50-PY	NL-R250-PY	NL-R500-PY	NL-R1000-PY	NL-R2000-PY	NL-R5000-PY
--	-----------	-----------	------------	------------	-------------	-------------	-------------

TECHNICAL SPECIFICATIONS

Bending Moment (N.m)		100	290	745	900	5750	6500	18500
Vertical Load (kg)		20	50	250	500	1000	2000	5000
Nominal Torque (N.m)	PITCH	75	320	575	1400	2600	3150	12400
	YAW	75	110	200	700	1600	1525	3200
Maximum Torque (N.m)	PITCH	100	400	700	1900	3500	4000	13500
	YAW	100	175	280	1000	2400	2000	4000
Power (kW)	PITCH	0,4	0,75	1	1	1	1	2
	YAW	0,4	0,75	1	1	1	1	2
Nominal Speed (°/sn)		20	10	5	5	2	2	2
Maximum Speed (°/sn)		30	15	7,5	7,5	3	3	3
Standard Repeatability (deg)		±0,03	±0,03	±0,03	±0,03	±0,03	±0,03	±0,03
Operating Range (deg)	PITCH	±185	±185	±185	±185	±185	±185	±185
	YAW	±95	±95	±95	±95	±95	±95	±95
Encoder Type	Absolute Encoder							
Motor Type	Servo Motor							
Operating Temperature	- 20° C to 55° C							
Storage Conditions	- 40° C to 60° C							
Communication	Ethernet / IP MODBUS							

PHYSICAL

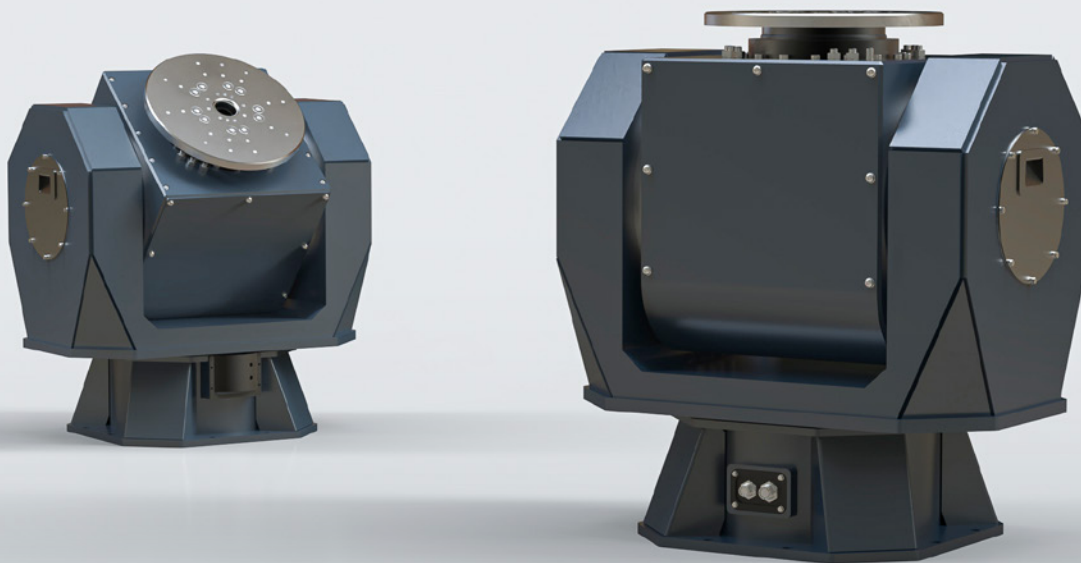
Height (mm)	275	400	500	750	1000	1100	1200
Width / Depth (mm)	350x350	350x350	500x500	500x500	500x500	1000x1000	1000x1000
Weight (kg)	30	60	100	300	580	750	1000

OPTIONAL

- 55° C to +90° C Operating Temperature	Serial Communication	±0.005 Position Repeatability	Slipping	Fixture
---	----------------------	-------------------------------	----------	---------

THREE AXIS POSITIONERS

► NL-Rxxx-YPR



NL-R50-YPR

NL-R250-YPR

NL-R500-YPR

NL-R1000-YPR

NL-R2000-YPR

NL-R5000-YPR

TECHNICAL SPECIFICATIONS

	NL-R50-YPR	NL-R250-YPR	NL-R500-YPR	NL-R1000-YPR	NL-R2000-YPR	NL-R5000-YPR
Bending Moment (N.m)	100	420	800	5800	6500	18750
Vertical Load (kg)	50	250	500	1000	2000	5000
Nominal Torque (N.m)	YAW	200	200	500	2000	4000
	PITCH	320	575	1400	2600	3150
	ROLL	110	200	700	1600	1525
Maximum Torque (N.m)	YAW	280	280	700	2800	5300
	PITCH	400	700	1900	3500	4000
	ROLL	175	280	1000	2400	2000
Power (kW)	YAW	0,75	1	1	1	2
	PITCH	0,75	1	1	1	2
	ROLL	0,75	1	1	1	1
Nominal Speed (°/sn)	10	5	5	2	2	2
Maximum Speed (°/sn)	15	7,5	7,5	3	3	3
Standard Repeatability (deg)	±0,03	±0,03	±0,03	±0,03	±0,03	±0,03
Operating Range (deg)	YAW	±185	±185	±185	±185	±185
	PITCH	±95	±95	±95	±95	±95
	ROLL	±200	±200	±200	±200	±200
Encoder Type	Absolute Encoder					
Motor Type	Servo Motor					
Operating Temperature	- 20° C to 55° C					
Storage Conditions	- 40° C to 60° C					
Communication	Ethernet / IP MODBUS					

PHYSICAL

	NL-R50-YPR	NL-R250-YPR	NL-R500-YPR	NL-R1000-YPR	NL-R2000-YPR	NL-R5000-YPR
Height (mm)	650	800	1000	1200	1500	1700
Width / Depth (mm)	350x350	500x500	750x750	750x750	1000x1000	1000x1000
Weight (kg)	150	200	300	650	750	1200

OPTIONAL

- 55° C to +90° C Operating Temperature

Serial Communication

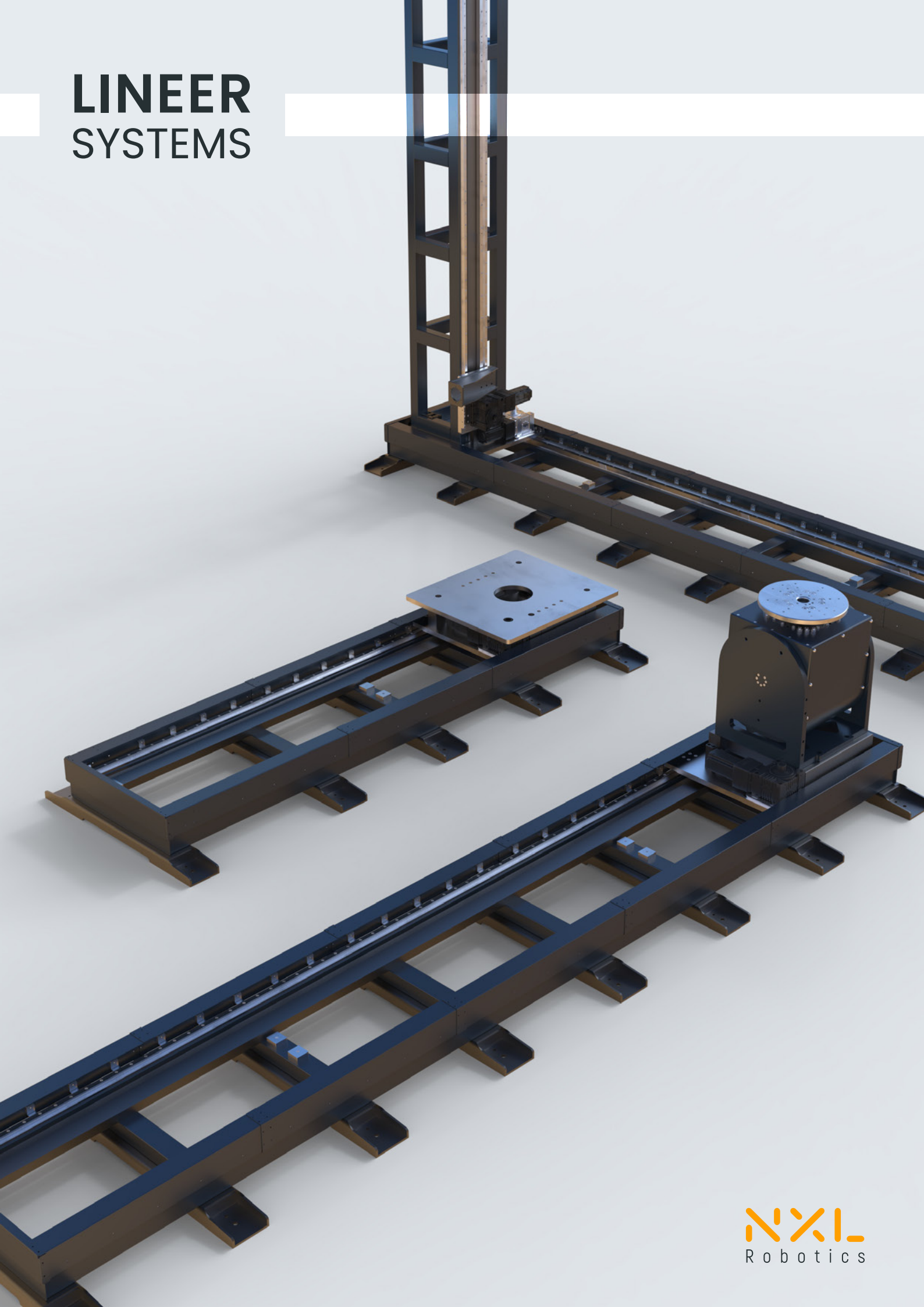
±0.005 Position Repeatability

Slipping

Fixture



LINEER SYSTEMS



The logo for Next Level Robotics features the letters 'NXL' in a stylized, orange, blocky font. Below the letters, the word 'Robotics' is written in a white, lowercase, sans-serif font.

NXL
Robotics

NEXT LEVEL ROBOTICS A.Ş.

www.nextlevelrobotics.com



+90 (850) 307 54 24



info@nextlevelrobotics.com



Ostim OSB mah. 1224 Sk. No: 1
Yenimahalle / ANKARA